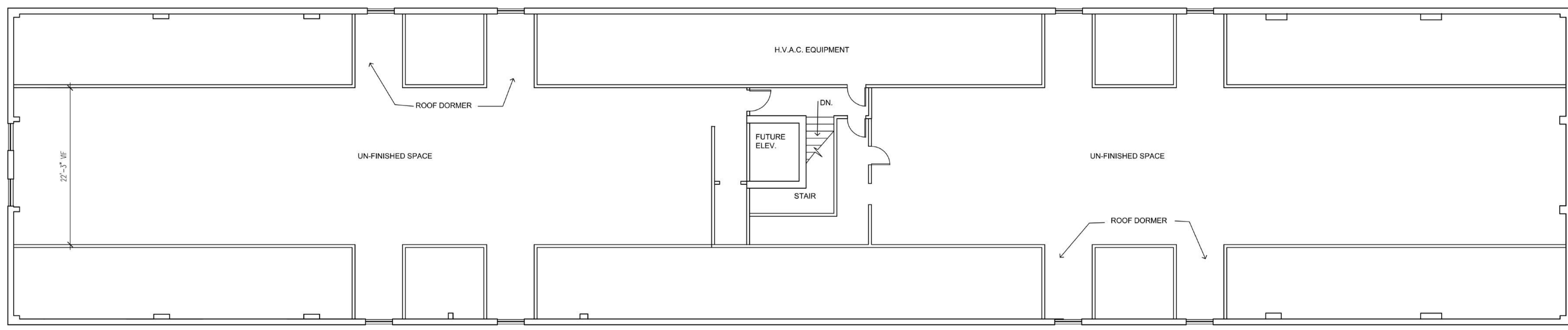
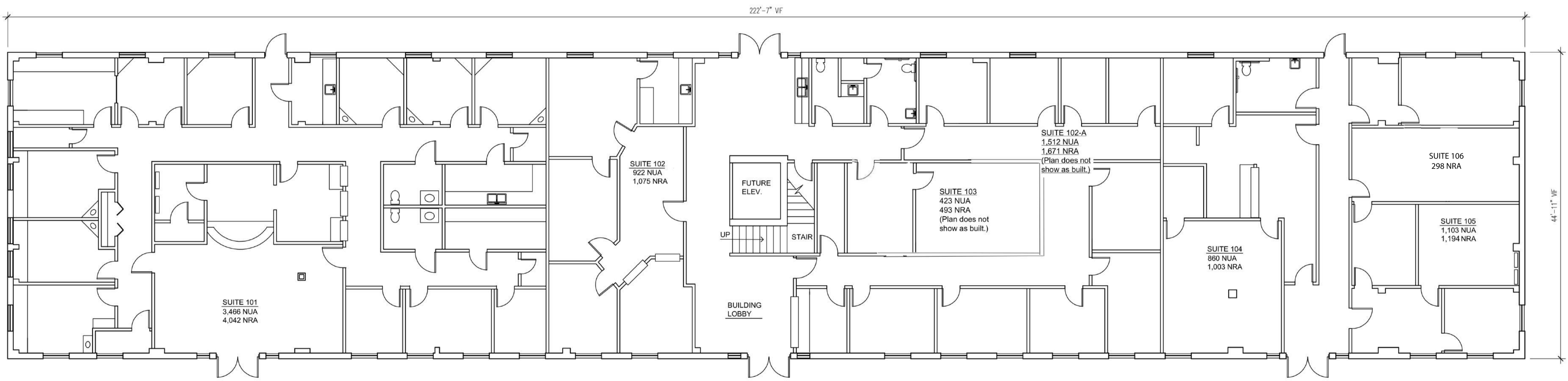


Revisions:

No.	Date	Description



AS-BUILT PLAN - LEVEL 2:



AS-BUILT PLAN - LEVEL 1:

BUILDING TOTAL: 9,768 S.F. (HCAD)
 LESS COMMON AREAS: CORRIDORS,
 REST ROOMS, STAIRS, ELEC. ROOM,
 1,392 S.F.
 ADD-ON FACTOR: 16.62%
 9,768 S.F. SUBTRACT 1,392 EQUALS 8,376 S.F.
 8,376 S.F. X 16.62% EQUALS : 9,768 S.F.

WURTZLER DESIGN GROUP
 2330 TIMBER SHADOWS DR. #100 KINGWOOD, TEXAS 77339
 TEL: 281-359-4883 CELL: 713-515-0083
 www.wurtzlerdesign.com

**NORTHEAST
 MEDICAL BUILDING**
 18525 W. Lake Houston Pkwy

ATASCOCITA, TEXAS
 INTERIOR BUILDOUT



A1.00