

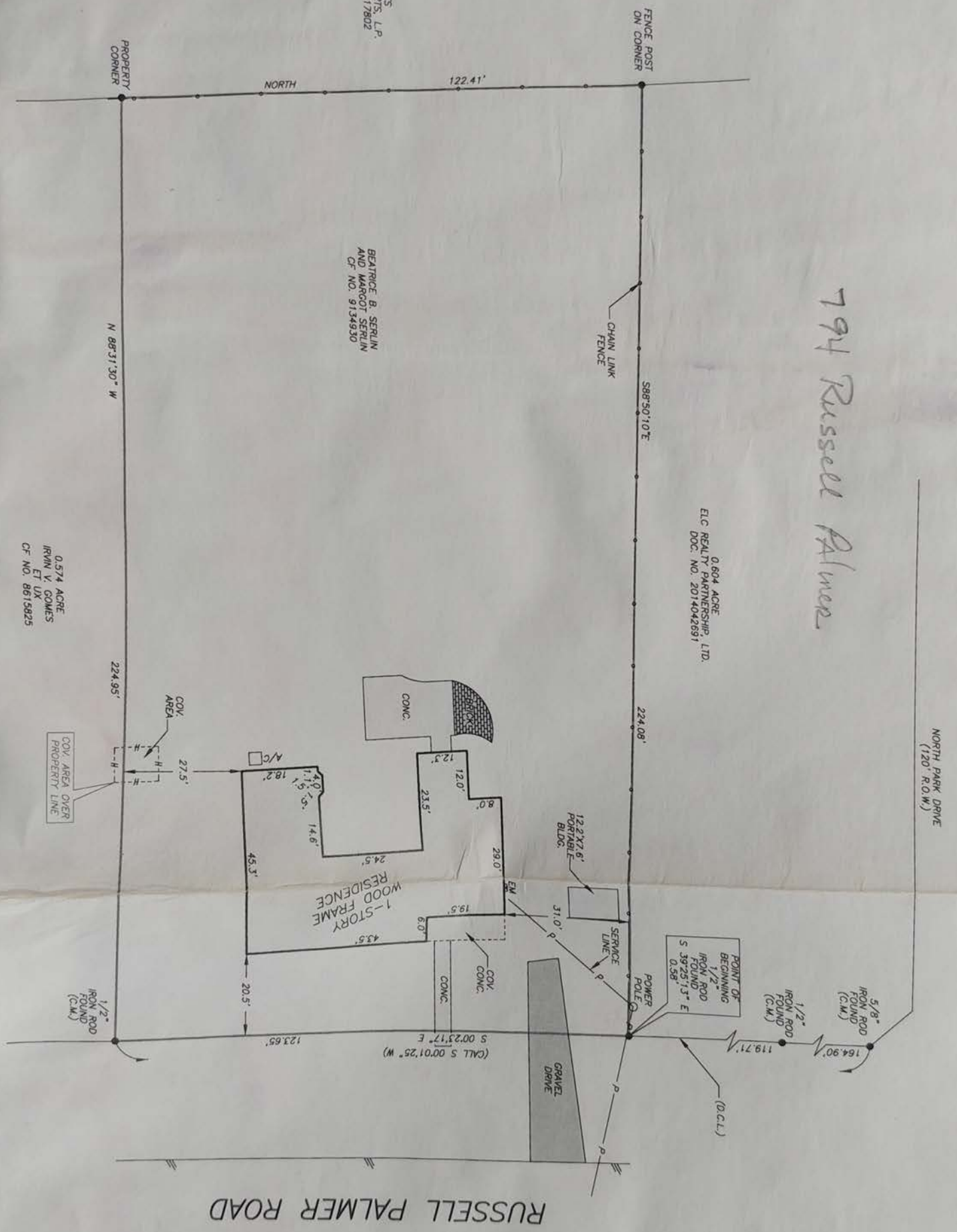
794 Russell Palmer

0.604 ACRE  
E/C REALTY PARTNERSHIP, LTD.  
DOC. NO. 2014042691

2.435 ACRES  
LIZALDE AUTO PARTS, L.P.  
CF. NO. 2006-017802

BEATRICE B. SERLIN  
AND HARROD SERLIN  
CF. NO. 9134930

0.574 ACRE  
IRVIN V. COMES  
ET UX  
CF. NO. 8615825



RUSSELL PALMER ROAD

NORTH PARK DRIVE  
(120' R.O.W.)