

GROSS AREA: 26,850 sq/ft

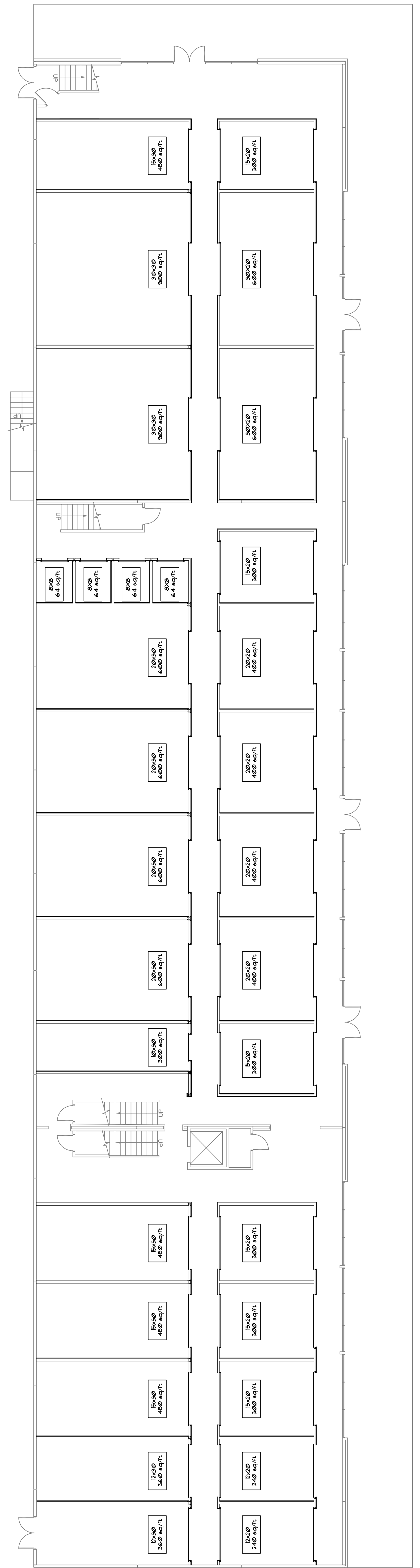
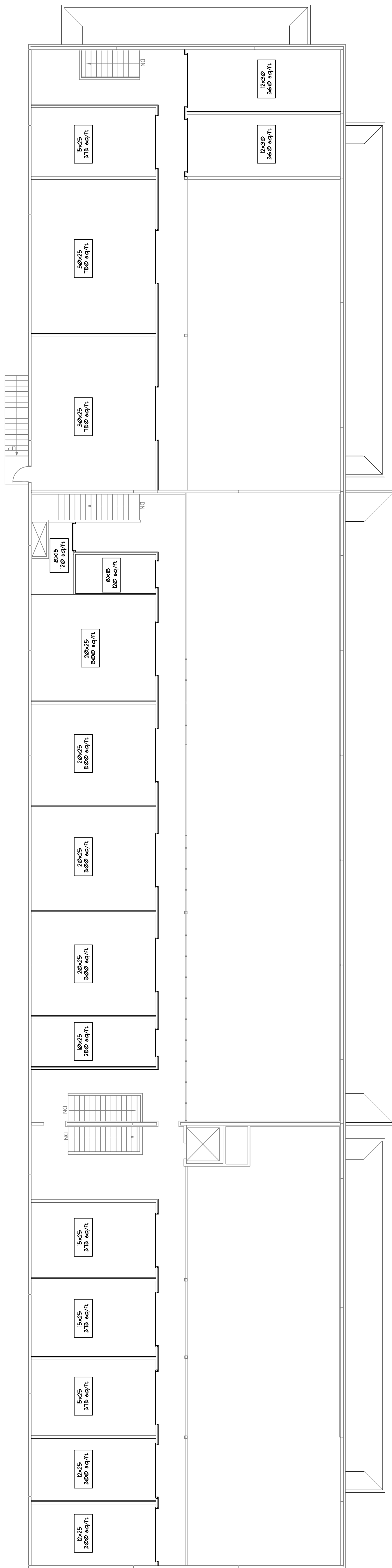
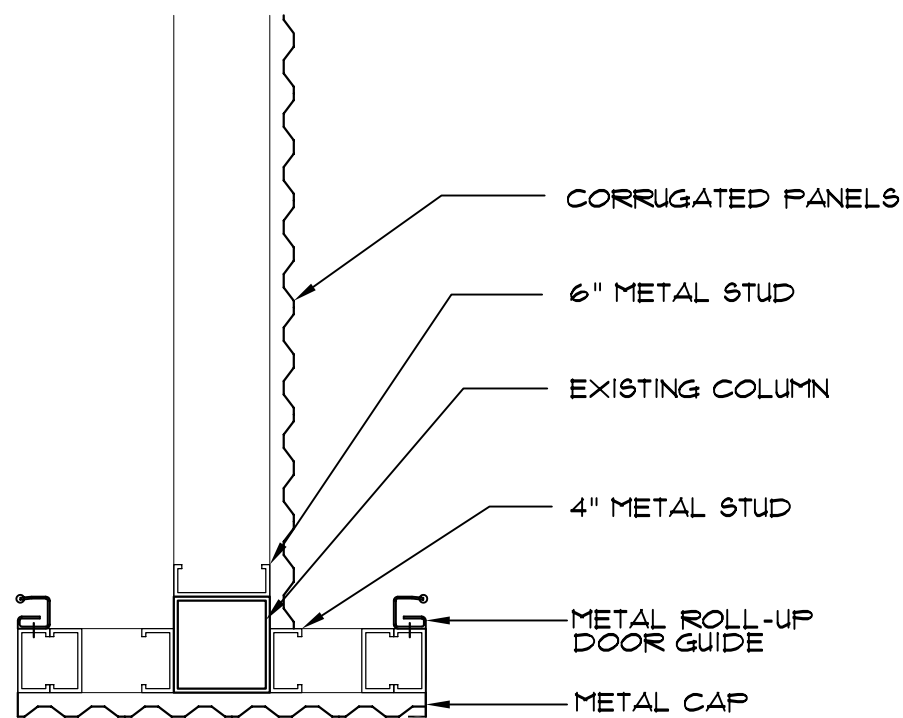
RENTABLE AREA: 1ST FL 12,096 sq/ft
 2ND FL 6,650 sq/ft
 TOTAL 18,746 sq/ft

SQUARE FOOTAGE CALCULATIONS

SELF STORAGE UNITS

SIZE	FLOOR	# UNITS
8x8	1ST FLOOR INTERIOR	4
12x20	1ST FLOOR INTERIOR	2
15x20	1ST FLOOR INTERIOR	6
20x20	1ST FLOOR INTERIOR	4
10x30	1ST FLOOR INTERIOR	1
12x30	1ST FLOOR INTERIOR	2
15x30	1ST FLOOR INTERIOR	4
20x30	1ST FLOOR INTERIOR	6
30x30	1ST FLOOR INTERIOR	2
TOTAL UNITS		31
8x15	2ND FLOOR INTERIOR	2
10x25	2ND FLOOR INTERIOR	1
12x25	2ND FLOOR INTERIOR	2
15x25	2ND FLOOR INTERIOR	4
20x25	2ND FLOOR INTERIOR	4
30x25	2ND FLOOR INTERIOR	2
TOTAL UNITS		15

STORAGE UNIT CHART



1st Floor Plan Scale: 1" = 1'-0" 3

1st Floor Plan Scale: 3/32" = 1'-0" 2

1st Floor Plan Scale: 3/32" = 1'-0" 1

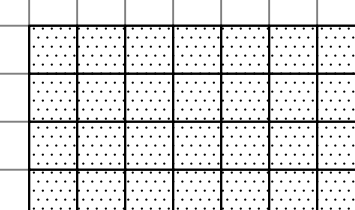
Copyright 2009 Kaim Associates Inc.

Sheet	Engineer	Architect
Sheet Name		Namer Kaim TBAE 02111
Purpose		These drawings and specifications are incomplete and may not be used for regulatory approval, permit or construction.
Date		
04-17-09		

KAI Project No. 2912100

Baker Court Building
Tenant Improvements
PUBLIC STORAGE FACILITY
 Baytown, Texas

2218 Northpark, Suite 206
 Kingwood, Tx 77339
 281/358-0964
 Fax 281/358-0965



Kaim Associates, Inc.
 Architecture • Project Management