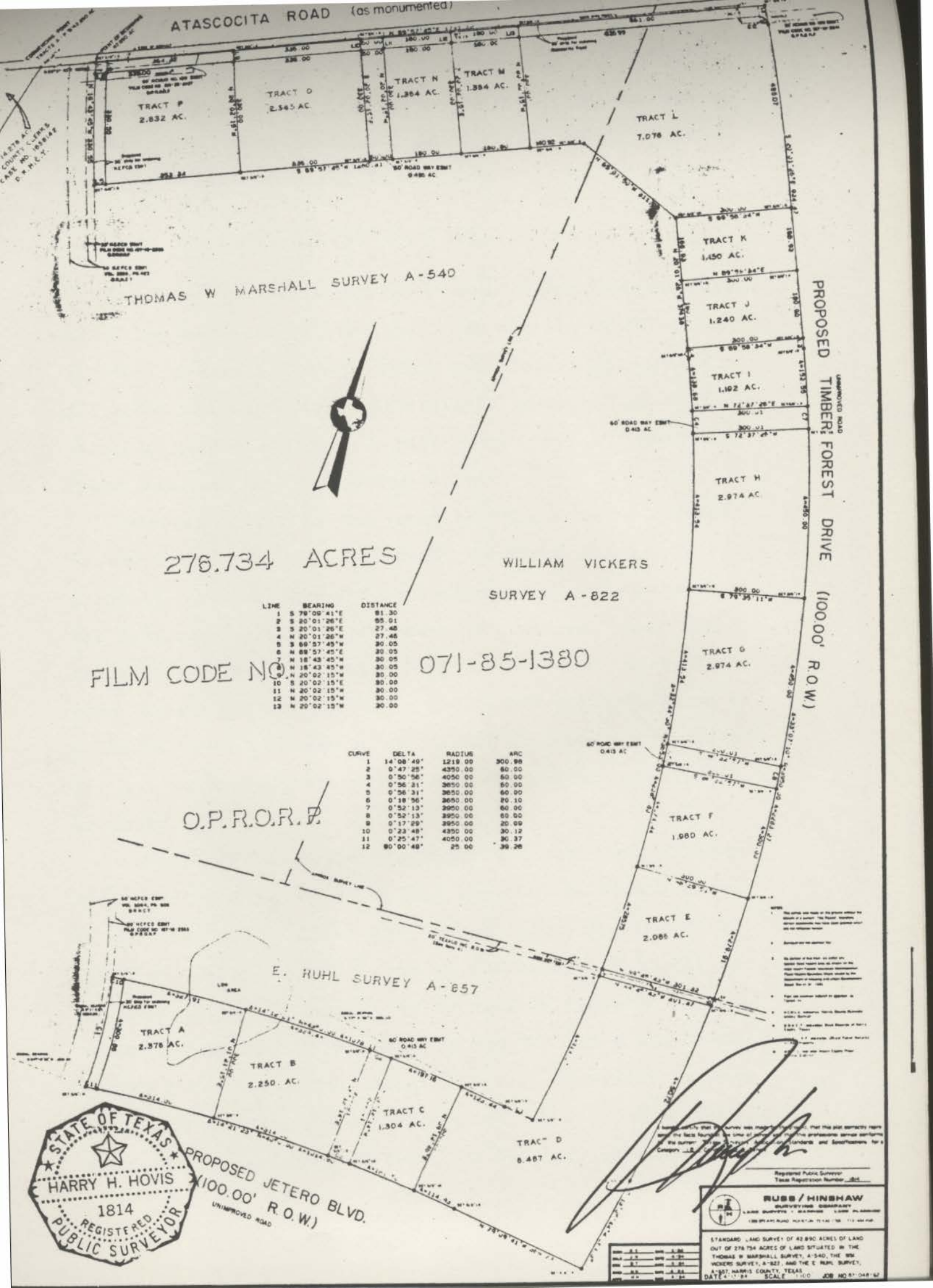


ATASCOCITA ROAD (as monument)



THOMAS W MARSHALL SURVEY A-540

276.734 ACRES

WILLIAM VICKERS  
SURVEY A-822

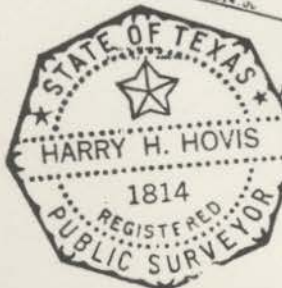
FILM CODE NO 071-85-1380

LINE	BEARING	DISTANCE
1	S 79°00'41"E	81.30
2	S 20°01'26"E	95.01
3	S 20°01'26"E	27.46
4	N 20°01'26"W	27.46
5	S 89°57'45"W	30.05
6	N 89°57'45"E	30.05
7	N 18°43'45"W	30.05
8	N 18°43'45"E	30.05
9	N 20°02'15"W	30.00
10	S 20°02'15"E	30.00
11	N 20°02'15"W	30.00
12	N 20°02'15"E	30.00
13	N 20°02'15"W	30.00

CURVE	DELTA	RADIUS	ARC
1	14°08'49"	1219.00	300.98
2	0°47'25"	4350.00	60.00
3	0°50'56"	4050.00	60.00
4	0°56'21"	3650.00	60.00
5	0°56'31"	3650.00	60.00
6	0°18'56"	2650.00	60.10
7	0°52'13"	3950.00	60.00
8	0°52'13"	3950.00	60.00
9	0°17'29"	3950.00	20.09
10	0°23'48"	4350.00	30.12
11	0°25'47"	4050.00	30.37
12	90°00'48"	25.00	39.26

O.P.R.O.R.P.

E. RUHL SURVEY A-857



PROPOSED JETERO BLVD.  
(100.00' R.O.W.)  
UNIMPROVED ROAD

- 1. This plat was made by the person whose name is printed hereon, or by a person acting under his direct supervision, and he is a duly licensed and qualified Surveyor in the State of Texas.
- 2. He certifies that the facts shown on this plat are true and correct, and that the same were obtained by him or by a person acting under his direct supervision, and that the same were obtained by him or by a person acting under his direct supervision, and that the same were obtained by him or by a person acting under his direct supervision.
- 3. He certifies that the facts shown on this plat are true and correct, and that the same were obtained by him or by a person acting under his direct supervision, and that the same were obtained by him or by a person acting under his direct supervision, and that the same were obtained by him or by a person acting under his direct supervision.
- 4. He certifies that the facts shown on this plat are true and correct, and that the same were obtained by him or by a person acting under his direct supervision, and that the same were obtained by him or by a person acting under his direct supervision, and that the same were obtained by him or by a person acting under his direct supervision.
- 5. He certifies that the facts shown on this plat are true and correct, and that the same were obtained by him or by a person acting under his direct supervision, and that the same were obtained by him or by a person acting under his direct supervision, and that the same were obtained by him or by a person acting under his direct supervision.
- 6. He certifies that the facts shown on this plat are true and correct, and that the same were obtained by him or by a person acting under his direct supervision, and that the same were obtained by him or by a person acting under his direct supervision, and that the same were obtained by him or by a person acting under his direct supervision.
- 7. He certifies that the facts shown on this plat are true and correct, and that the same were obtained by him or by a person acting under his direct supervision, and that the same were obtained by him or by a person acting under his direct supervision, and that the same were obtained by him or by a person acting under his direct supervision.
- 8. He certifies that the facts shown on this plat are true and correct, and that the same were obtained by him or by a person acting under his direct supervision, and that the same were obtained by him or by a person acting under his direct supervision, and that the same were obtained by him or by a person acting under his direct supervision.
- 9. He certifies that the facts shown on this plat are true and correct, and that the same were obtained by him or by a person acting under his direct supervision, and that the same were obtained by him or by a person acting under his direct supervision, and that the same were obtained by him or by a person acting under his direct supervision.
- 10. He certifies that the facts shown on this plat are true and correct, and that the same were obtained by him or by a person acting under his direct supervision, and that the same were obtained by him or by a person acting under his direct supervision, and that the same were obtained by him or by a person acting under his direct supervision.

*[Signature]*  
Registered Public Surveyor  
Texas Registration Number 282

**RUBB / HINSHAW**  
SURVEYING ENGINEERS  
1000 WEST 11TH STREET, SUITE 100, ARLINGTON, TEXAS 76010  
TELEPHONE (817) 261-1111

STANDARD LAND SURVEY OF 42.890 ACRES OF LAND  
OUT OF 276.734 ACRES OF LAND SITUATED IN THE  
THOMAS W MARSHALL SURVEY, A-540, THE W.M.  
VICKERS SURVEY, A-822, AND THE E. RUHL SURVEY,  
A-857, HARRIS COUNTY, TEXAS.  
DATE 4-17-84 SCALE 1"=100' JOB NO. 81-048-87